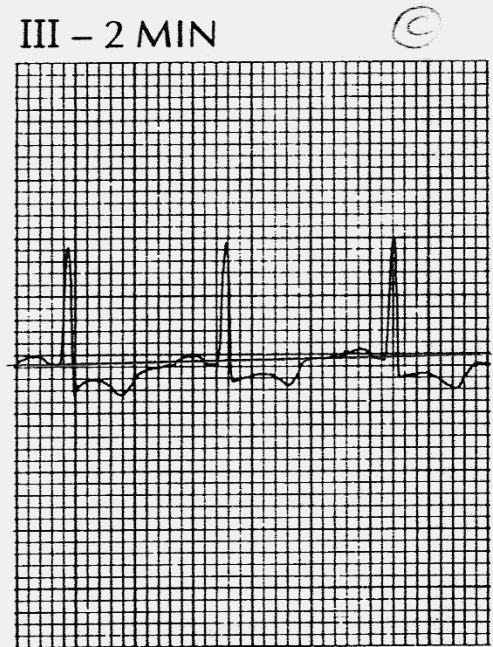
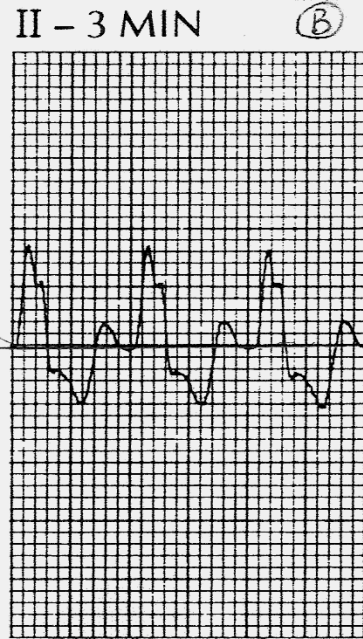
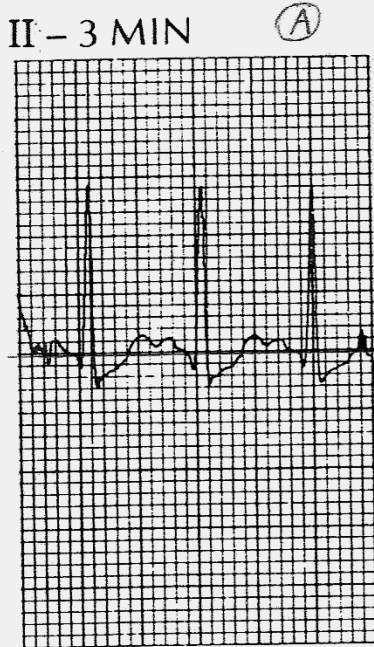


ST SEGMENT ANALYSIS ASSIGNMENT
KINE 439: EXERCISE EVALUATION & PRESCRIPTION

NAME KEY DUE _____

- For each strip below,
1. Draw an accurate baseline across 3 cycles;
 2. Indicate with a small slash across the tracing where you pick the J point to be (start of ST segment);
 3. Determine ST segment depression in mm;
 4. Describe type of ST segment depression (horizontal, up- or down-sloping).
 5. Fill in the blanks below each strip.



mm depression: 1.0 mm

shape: up-sloping

mm depression: 4.0 mm

shape: down-sloping

mm depression: 1.5 mm

shape: horizontal
 (almost down-sloping)